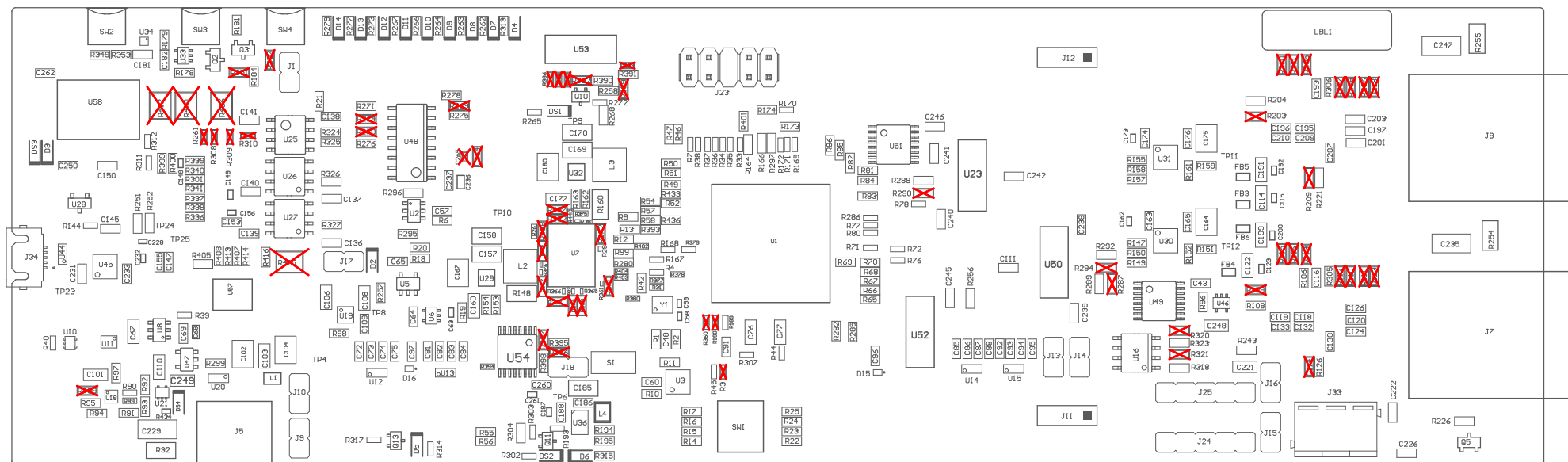


- Z21 Install label in silkscreened box after final wash. Text shall be 8 pt font. Text shall be per the Label Table in the PDF schematic.
- Z22 These assemblies are ESD sensitive, ESD precautions shall be observed.
- Z23 These assemblies must be clean and free from flux and all contaminants. Use of no clean flux is not acceptable.
- Z24 These assemblies must comply with workmanship standards IPC-A-610 Class 2, unless otherwise specified.



COMPONENTS MARKED 'DNP' SHOULD NOT BE POPULATED.  
ASSEMBLY VARIANT: 001

PCB VIEWED FROM TOP SIDE	BOARD #: PROC171	REV: A	SUN REV: Unknown revision
M5 Assembly Top	TID #: N/A		
PLOT NAME = Top Assembly Drawing	GENERATED : 18-05-2025 20:56:50	TEXAS INSTRUMENTS	

